

spinsø



Installation Guide (*Trial Edition*)

Step by step guide for download and installation



Installation Guide

1.	Index	pg 2
2.	Download & Install	pg 3
3.	Login	pg 6

2

Download & Install

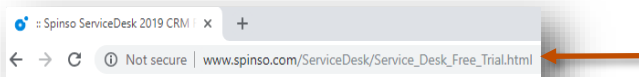
Installing ServiceDesk Basic is quiet easy. A simple setup wizard will guide you through the entire installation process. Follow these step by step instructions to help you install ServiceDesk Basic on your computer.



Prerequisite

Operating system Windows Xp, Windows 7, 8, 8.1 or Windows 10

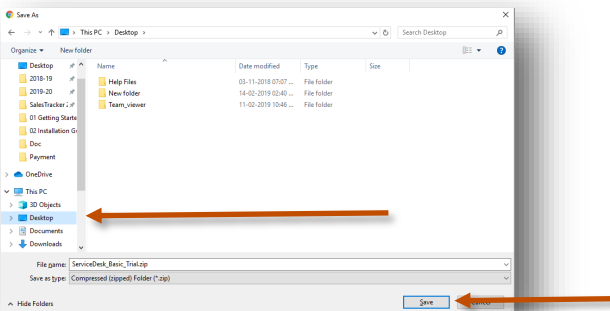
For windows Xp - Dot net 2.0 *free runtime from Microsoft is available on our website*



1

Download installer from our website

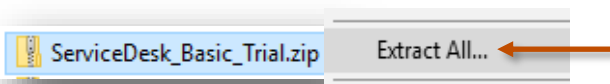
http://spinso.com/ServiceDesk/downloads/Free-Trial/ServiceDesk_Basic_Trial.zip



2

Select **Desktop** to save on our desktop

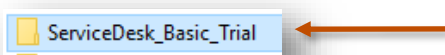
Click on **Save**



3

Extract Zip file

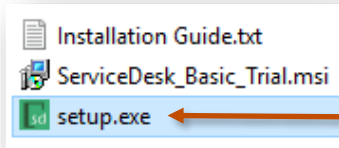
Right Click on zip file & Click **Extract All**



4

ServiceDesk_Basic_Trial folder will be created on desktop.

Open the folder **ServiceDesk_Basic_Trial**



5

You would see the following files
Run **Setup.exe** to install

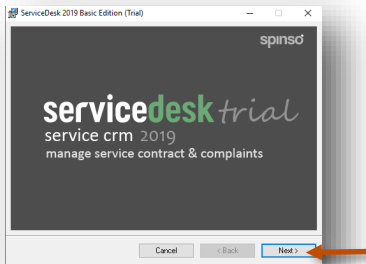


Note : In case you are prompted for unknown publisher error
Click on **More Info**
Click on **Run anyway** to continue



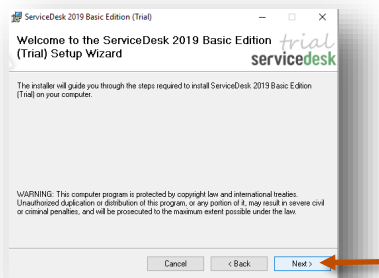
Note

We **do not** recommend you to run Setup.exe directly from ServiceDesk_Basic_Trial.zip file
Please unzip the ServiceDesk_Basic_Trial.zip file and run the setup from extracted folder



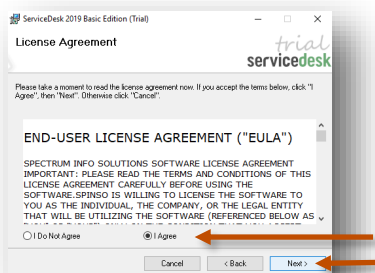
6

Click on **Next** button



7

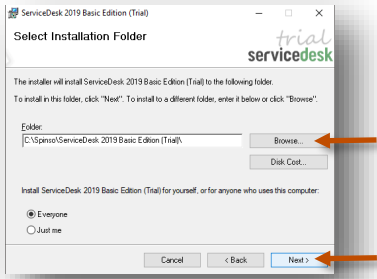
Click on **Next** button



8

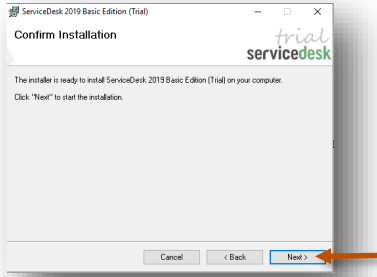
Select **I Agree**

Click on **Next** button

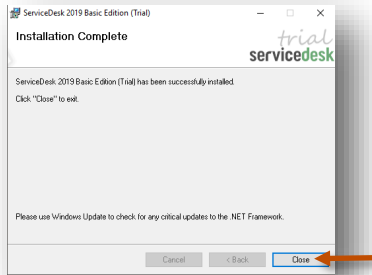


9 If you wish to change the installation path, Click on "**Browse**" and select the path for installation
We would recommend default path

Click on **Next** button



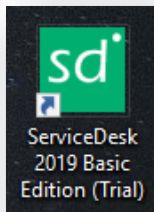
10 Click on **Next** button



11 Click on **Close** button

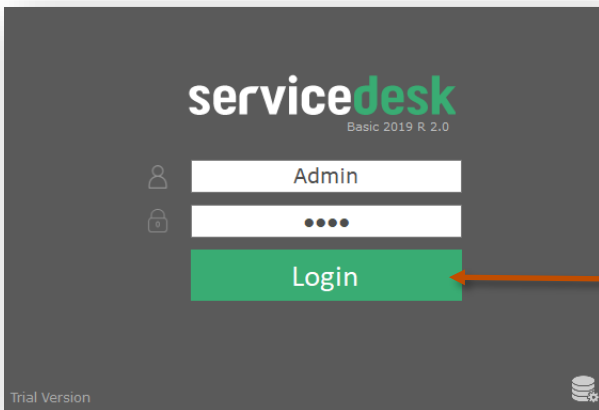
3

Login



After you install ServiceDesk you can click on the ServiceDesk icon on your desktop to launch the application

You can also launch the application from **Start - Program Files - Spinso - ServiceDesk**



In trial mode ServiceDesk login screen would Open with default login name and password

Default login details

Login Name : admin
Password : demo



Please note

You can change the password in **Master- Employee (users)** Screen
Once you change the password Login screen will not load default login and password

Other software's

salestracker
Sales CRM

TimeTracker
Project Timesheet

xplore
Digital catalog software

spinso

Spinso

601, 6th Floor, Odyssey IT Park,
Road No.9, Wagle Estate,
Thane (W) - 400 604.
Maharashtra, INDIA

www.spinso.com

info@spinso.com